



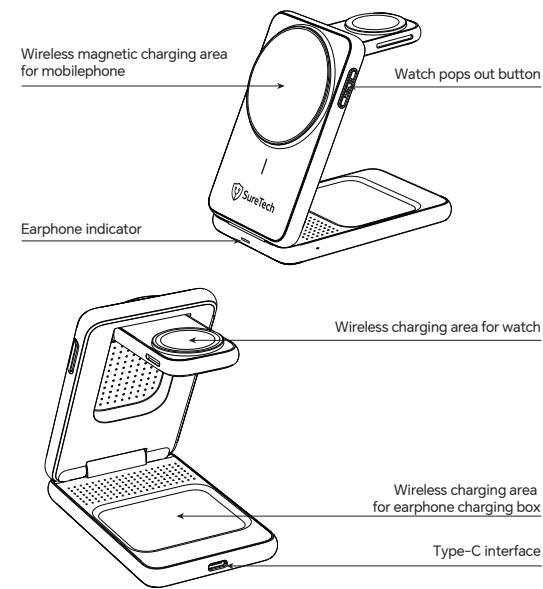
Product Manual

Wireless Charging Station

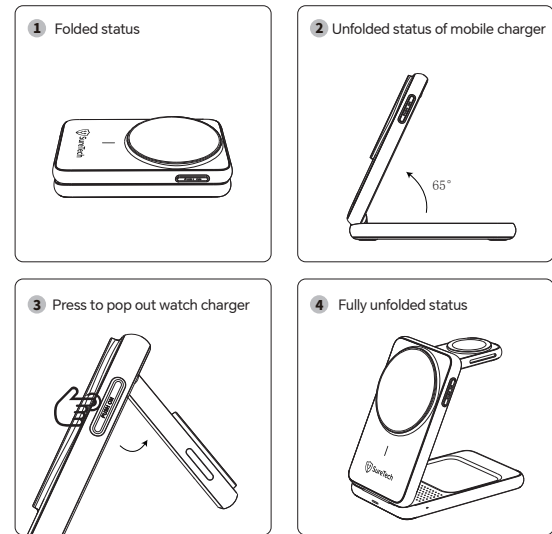
W93 Max



Product Diagram



Folding Diagram



Product Function

Mode	Earphone indicator
Power ON	Transfer to standby status through alternative flash once between blue light and green light
Standby	Blue light is always on
Charging of earphone box	Green light is always on
Full charge	Green light is always on
FOD protection of mobilephone terminal	Blue light always flashes until the abnormal status is removed.
FOD protection of earphone terminal	Green light always flashes until the abnormal status is removed.

Operation instruction

- This product can simultaneously charge three types of devices that support wireless charging function, including mobile phones, watches and headset wireless charging boxes.
- Please connect the wireless charger to the 9V/3A 12V/2.4A adapter through the Type-C fast charge cable and switch on the power source.
- Put the mobile phone in the charging area to charge the mobile phone.
- Put the watch in the watch charging area to charge the watch.
- Put the headset wireless charging case in the headset charging area to charge the headset wireless charging case.

Product Specifications

Name of product Wireless Charging Station	Input 12V~3.5A 15V~2.8A
Product size 105mm*66mm*24mm	Output (Mobilephone) 25W(MAX)
Conversion efficiency Slow charge≥70% Fast charge≥75%	Output (Charging box of earphone) 5W(Max)
Working frequency 110~360KHz	Output (Watch) 5W(Max)
Material ABS+PC+Alluminum alloy	Effective distance for wireless charging (mobile phone) ≤4mm
Adapter power C1/C2 (Single Port): 5V~3A, 9V~3A, 12V~3A, 15V~3A, 20V~3.25A; PPS: 3.3~15V~(Max 65W) Dual Ports: C1+C2 63W; C1+USB 63W; C2+USB 15W Triple Ports (Dynamic): C1 45W + (C2+USB) 15W PS: Recommended to connect W93 Max to port C1	

Cautions

Applicable devices
Please check whether your mobile phone supports wireless charging.
This product supports fast wireless charging and realizes short-distance wireless power transmission through coil induction.

Adapter choices

When using an adapter that meets the QC3.0 standard, the wireless charger supports a 25W load;

*To ensure the normal use of the charger, it is recommended to use PD fast charging or adapters that meet the QC3.0 standard

Warning!

Do not put metal debris or magnetic cards on the charging board, as it may cause the charger to heat up! Foreign objects should be removed when an alarm is triggered!
Slight heating is a normal phenomenon, as the phone battery may generate heat during charging!
Do not place the charger near a fire source or corrosive environment!

Package list:

Wireless charger x1
Charging cable x1
Product Manual x1
PD65W Adapter x1

Support Information:

Website: www.mysuretech.com/support
Email: support@mysuretech.com

