

S1 ANC+ENC 2.01" LCD



# USER MANUAL

## True Wireless Earbuds



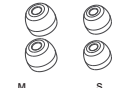
**Note:**

1. When using it for the first time, the charging case needs to be long pressed for 2 seconds to turn on.
2. The earbuds need to be activated from shipping mode. Please open the charging case cover and wait for about 5 seconds, until the battery levels of the left and right earphones are displayed on the screen.

### WHAT'S IN THE BOX



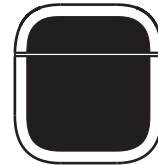
Earphones x1pc



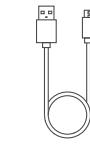
Silicone Ear Tips x2pc  
M (Assembled) S



User Manual x1pc



Charging Case x1pc

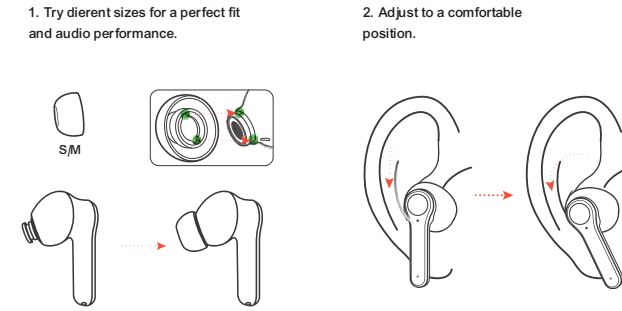


USB Cable x1pc

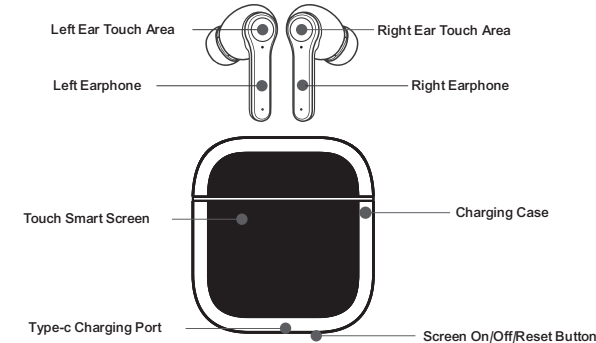
### SPECIFICATIONS

Bluetooth Version:	V6.0
Wireless Transmission Distance:	≥10 Meters
Drive Unit:	13mm, 32 Ω
Frequency Range:	20 Hz~20 KHz
Speaker Sensitivity:	121 ±3 dB
Music Playback Time (60% volume):	Approx 3.5 Hours
Headphone Talk Time(60% volume):	Approx 2 Hours
Battery life with Charging Case:	Approx 60 Hours
Charging Time:	Approx 1.5 Hours
Standby Time:	Approx 3 Months
Headphone Battery Capacity:	30 mAh
Charging Case Battery Capacity:	500 mAh
Charging Case Size:	61.3 x24.8x 66 mm
Total Weight:	Approx 66.5 g
Net Weight (Earphone x1 pc)	Approx 3.7 g

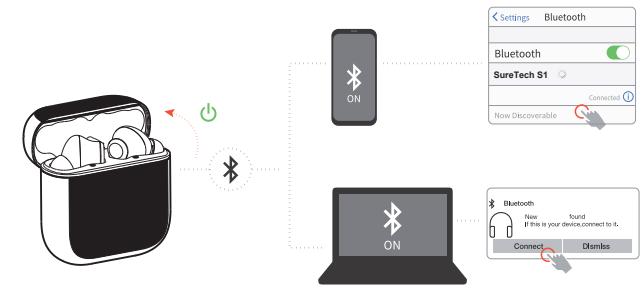
### WEARING MODE



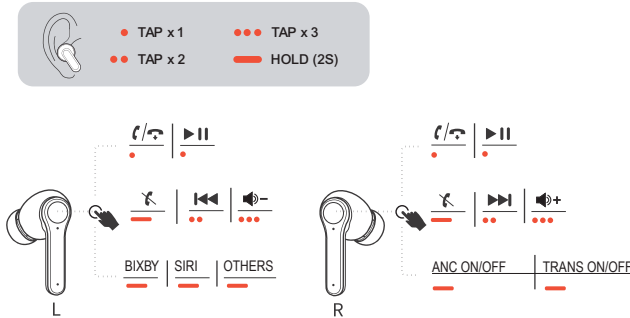
### PRODUCT DIAGRAM



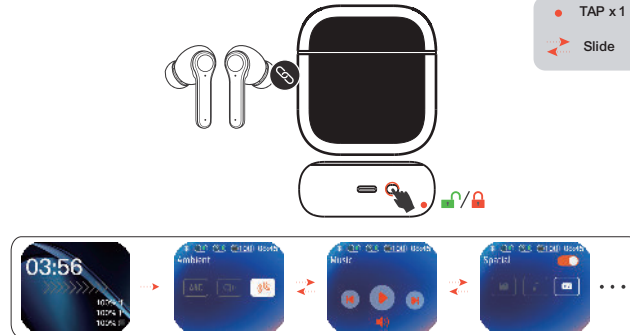
### OPENING AND CONNECTING



### EARPHONE TOUCH COMMAND



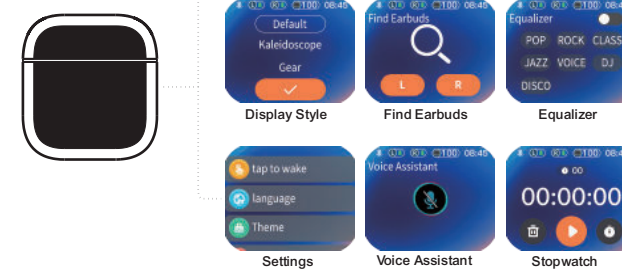
### SMART SCREEN TOUCH COMMAND



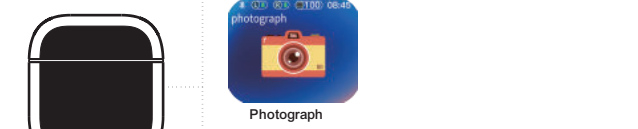
### LED INDICATOR DESCRIPTION

Flashing indicator light	Bluetooth not connected
Flashing indicator light	Bluetooth is connecting
Earbuds no indicator	Bluetooth connected

### FEATURE SHOW



### FEATURE SHOW



### MATTERS NEEDING ATTENTION

1. Please reasonably control the volume and time of using the headset to avoid hearing damage;
2. Do not use headphones in potentially dangerous environments to ensure safety;
3. Try to avoid using headphones to listen to music, make or receive phone calls while driving, so as not to distract attention and cause danger;
4. Please place earphones out of reach of children to avoid danger caused by improper use of children;
5. Avoid storing or using headphones at temperatures lower than -20°C or higher than 45°C, which will shorten the life of the headphones and battery;
6. Do not disassemble, repair and transform this product by yourself;
7. The battery of this product is not replaceable. Please dispose of it according to local regulations or recycle it by a professional organization. Do not discard it or throw it into the fire;
8. When the headset is not used for a long time, please charge the headset every 3 months to extend the battery life of the headset;
9. Do not expose the battery to high temperature environments such as sunshine and fire;
10. The output voltage and current of the charger are not greater than 5V/A, if the output voltage and current of the charger exceed the limit value, it is possible that it will cause serious damage to the product, product warranty will be void at the same time;
11. Please dispose of waste electronic products correctly, and do not discard electronic and electrical equipment, components, batteries and other household garbage together;
12. Please charge in a safe environment, when charging the charging bin, please pull out the charging cable as soon as possible after the charge is full to avoid long time charging causes damage to the battery.